

“Scaling Concept” of Gorontalo REDD+ Project

- From District level (Demonstration)
to Provincial level (Sub-National)

Kanematsu Corporation

To understand our project simply;

- Project Proponent;
 - (i) Boalemo District Gov., Gorontalo Province
 - (ii) PT. DKM (Panasonic Gobel Group), Jakarta
 - (iii) Kanematsu Corporation, Japan
- REDD+ Demonstration Activities;
 - (A) To develop “MRV”, consistent with national mitigation plan “RAD-GRK” (provincial)
 - (B) Cacao Project as “Safeguard Program”

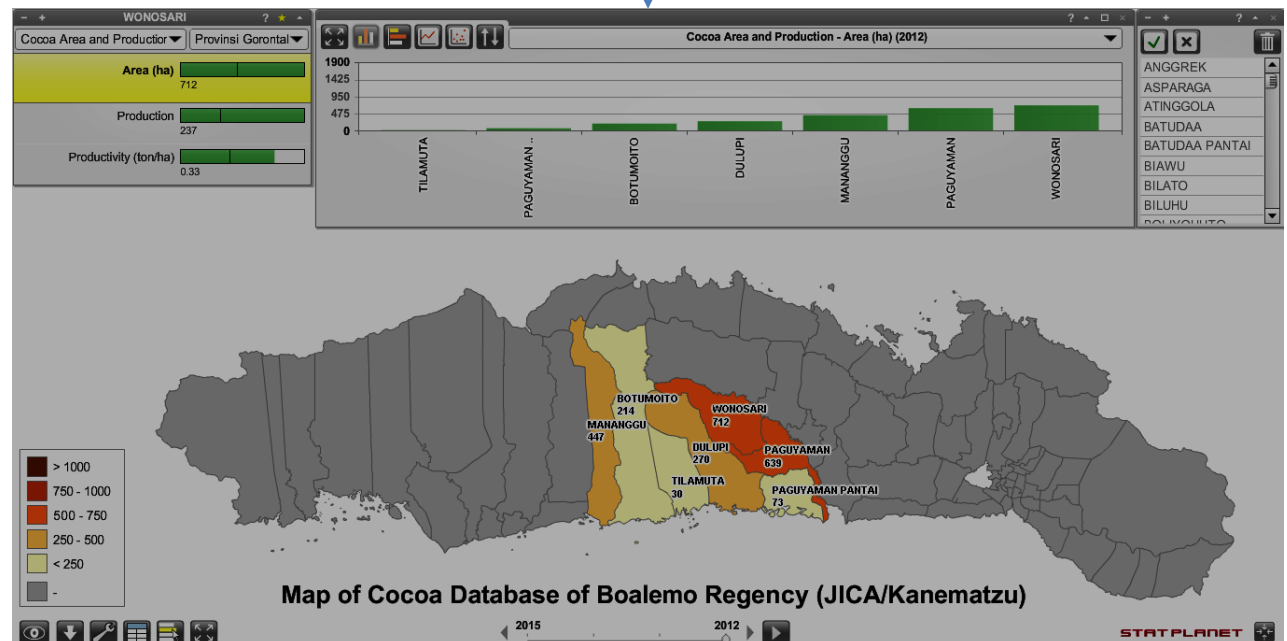
Boalemo District Major (“BUPATI”) and REDD+ demonstration project team



Gorontalo Province, Indonesia



- Sulawesi Island
- Gorontalo Province



Deforestation driver of Gorontalo Province is “Slash & Burn” of Corn agriculture

- Corn is major industry of Gorontalo Province.
- Provincial government has been providing subsidies to the corn farmers since 2002

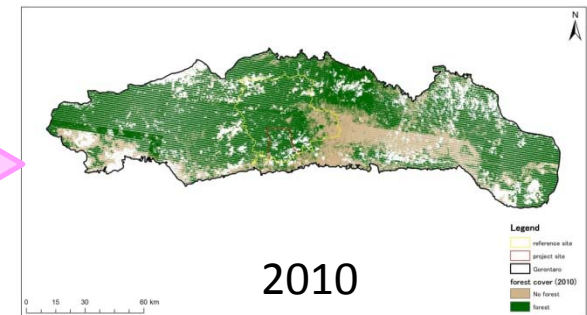
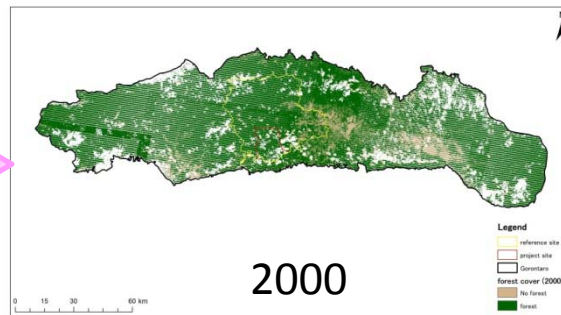
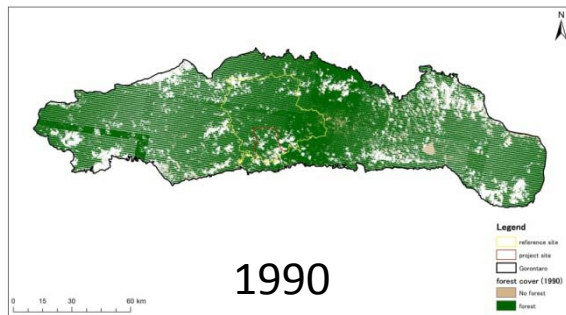
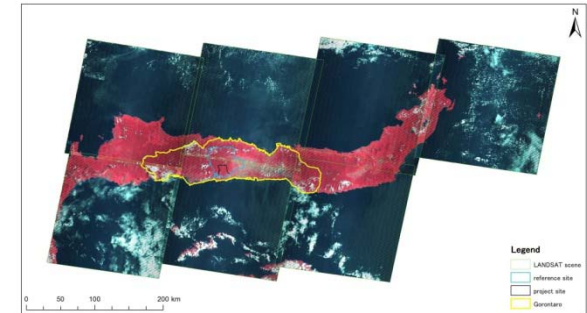
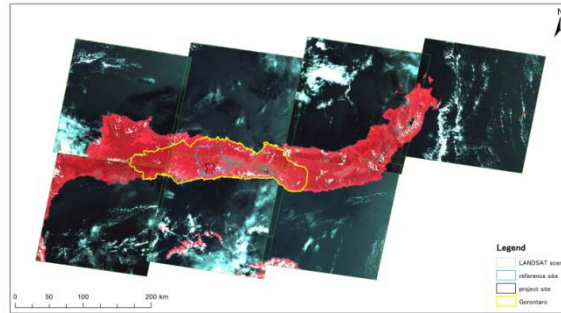
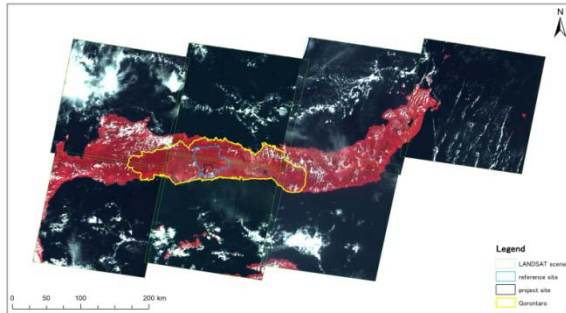


Photo: Government of Gorontalo Province

Slash & Burn for Corn agriculture



Deforestation of Gorontalo province



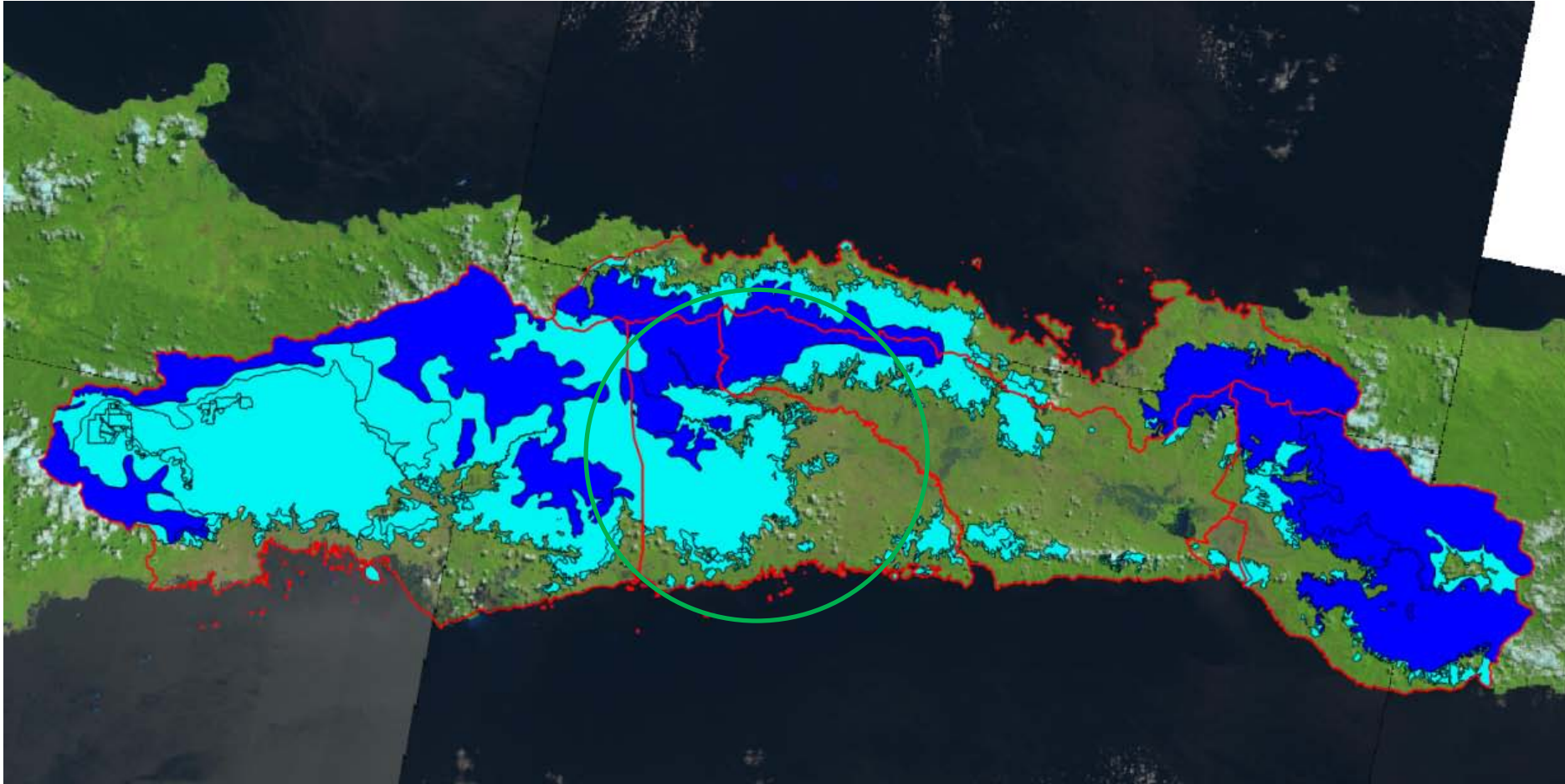
Forest area size (ha)

	1990	2000	2010
Forest	779,832	710,587	592,205
Non-Forest	43,213	112,458	230,547

Boalemo District



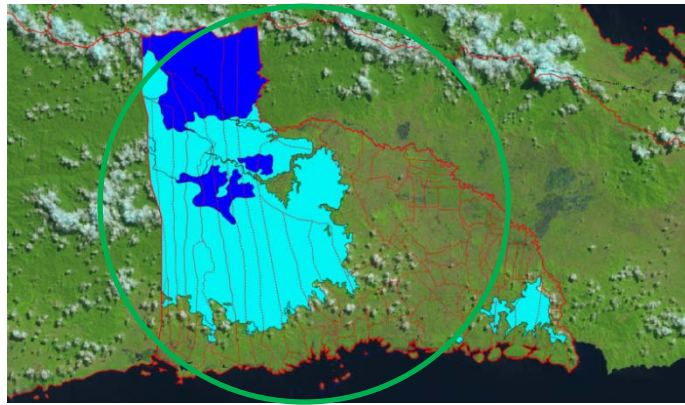
Reference area : Forest area of Gorontalo Province



- We have made “REL” from deforestation trend of whole Gorontalo Province.

Demonstration Project Boundary : Forest area of Boalemo District

- Our REDD+ project boundary is within this forest area; 88,815ha



- We will monitor the forest area size every year, and will compare with REL, then, we will know the emission reduction amount per year.

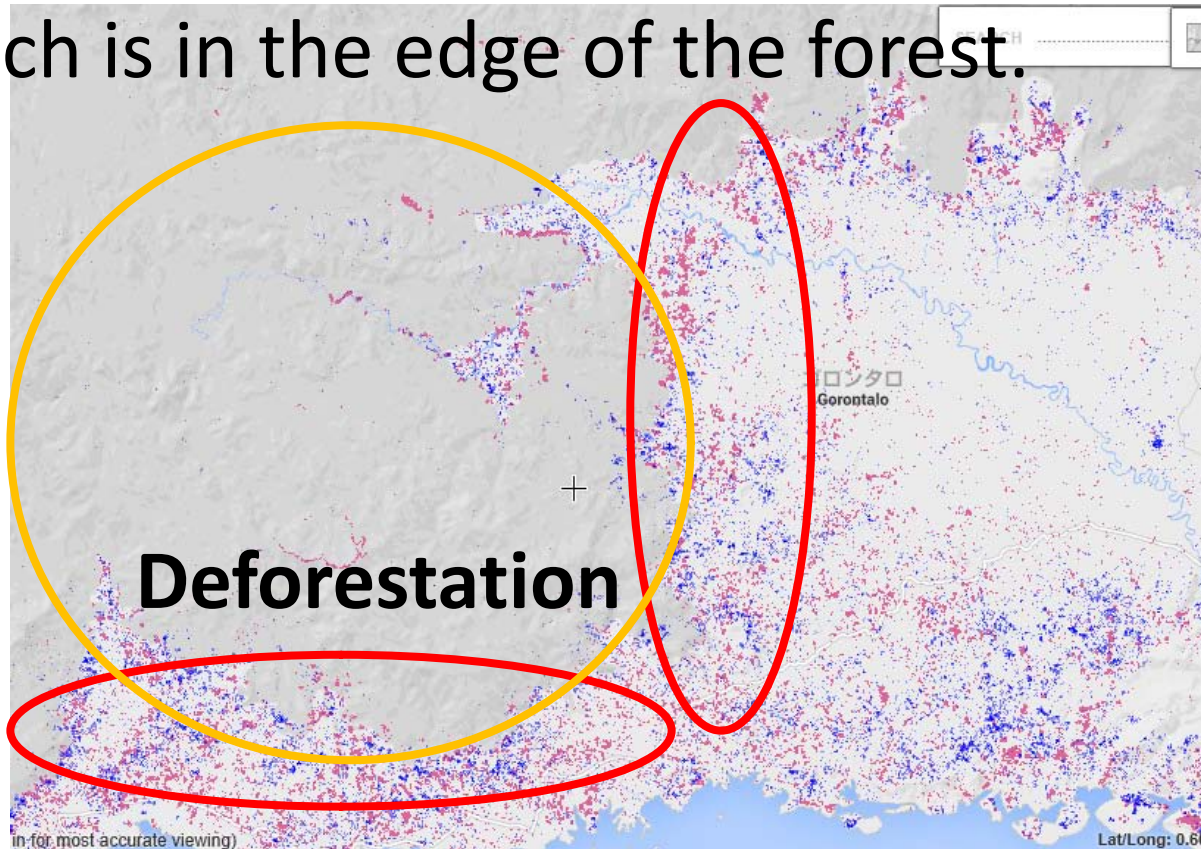
(For your reference)
Google earth

shows the forest area.



Next page shows the deforestation area.

(For your reference)
“Global Forest Watch”, supported by Google
shows the **deforestation area** (2001 - 2013),
which is in the edge of the forest.

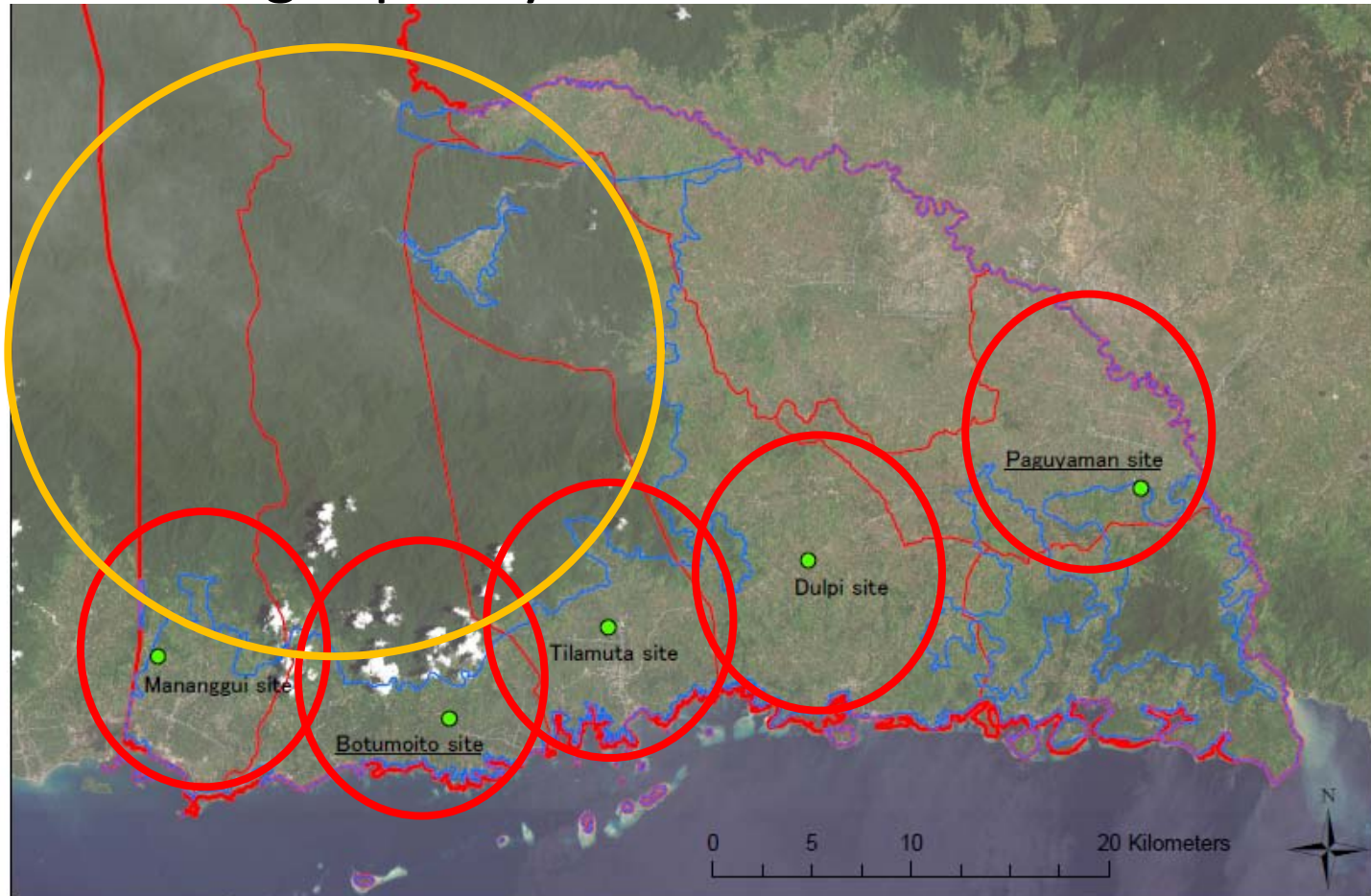


● Red: Tree cover loss

● Blue : Tree cover gain

Five (5) demonstration cacao farms

- As a part of REDD+ activities, for each sub-district, we have set up demonstration farm to show how to produce high quality cacao.



Cacao Program

- By providing “**Capacity Building**” and “**Value Chain**”, we help farmers to shift from CORN to CACAO.



Training of cacao production

- We provide “Capacity Building”.
- More than 20 farmers get together in the demonstration farm, then, farmers will broaden the knowledge to local community.



Seed Bed (Nursery)



Demonstration Farm

High Quality Chocolate made from Sulawesi Island

- Dari-K, a Japanese chocolate company in Kyoto, is importing fermented cacao beans from Sulawesi.



Training at the demonstration farm



To get better yield,
we teach important knowledge



Corn farmers learn how to make Cacao



Some corn farmers have already shifted from Corn to Cacao



Concept of our project

Without REDD+ project,
deforestation will increase

Forest Area


Non-Forest Area

2000

2010

2020

With REDD+ project,
we may keep the forest area size

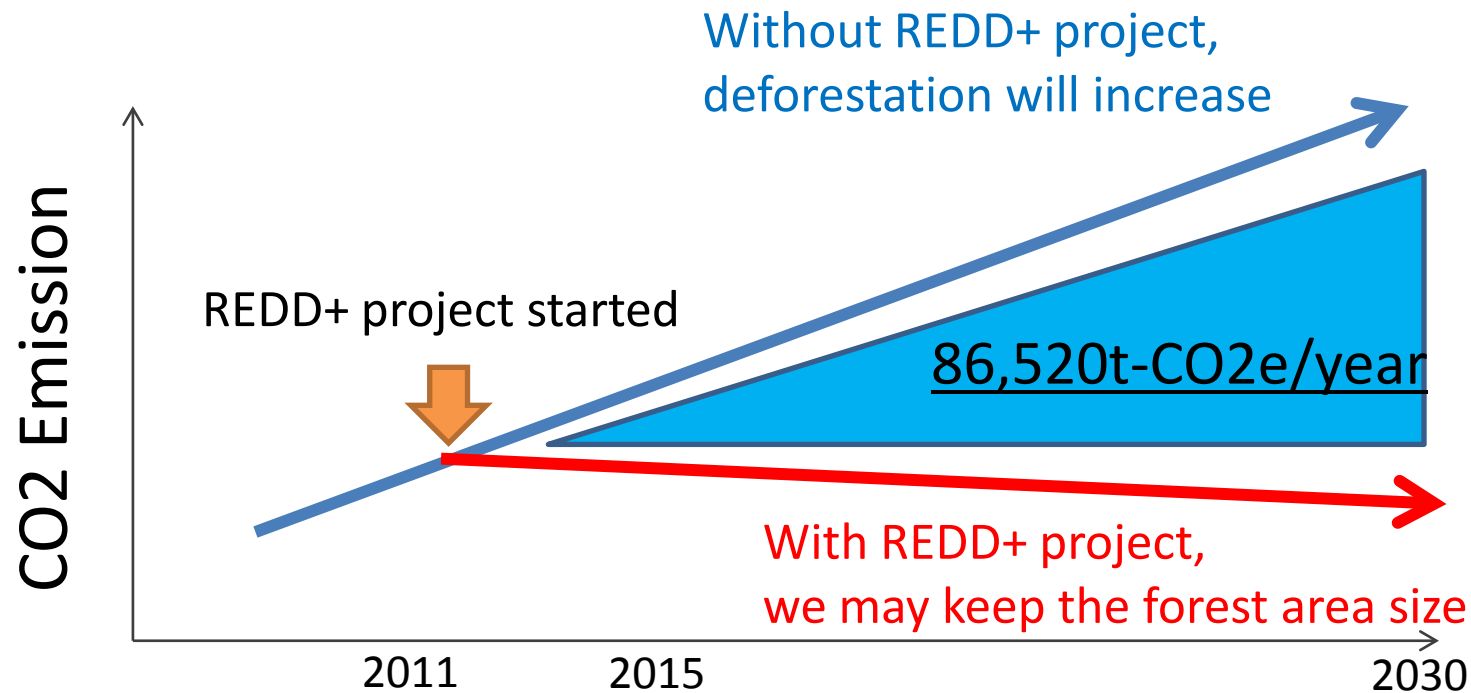
 "Slash & Burn" of CORN

 Cacao Farming

REDD+ team support
Cacao farmers.

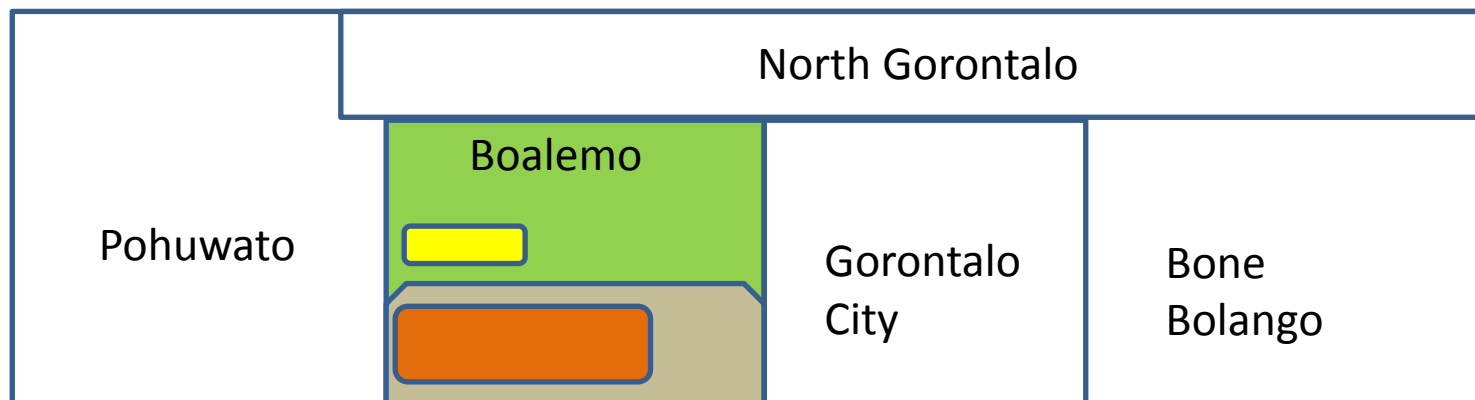
2020

Estimated CO2 Emission Reduction



“Scaling Concept”

From District Level to Sub-National



We apply same MRV to whole Gorontalo Province

Thank you for your attention !
Shinsuke_Yazaki@kanematsu.co.jp



Boalemo farmers produce high quality cacao, and bring prosperity to the community. We hope this program expands over whole Gorontalo.